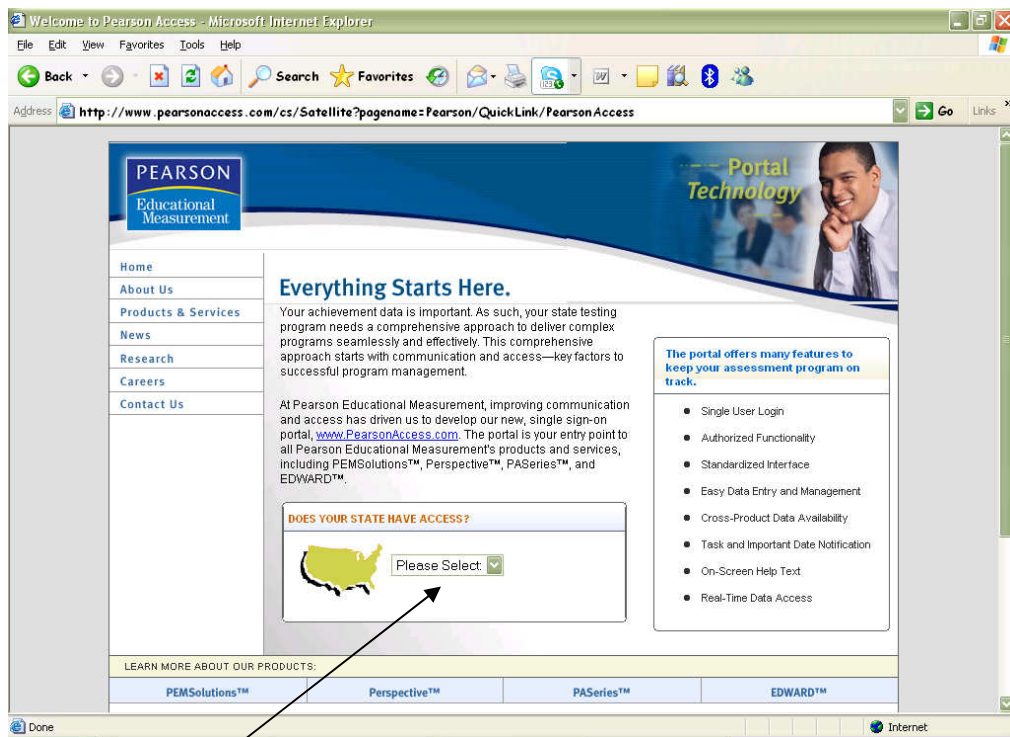
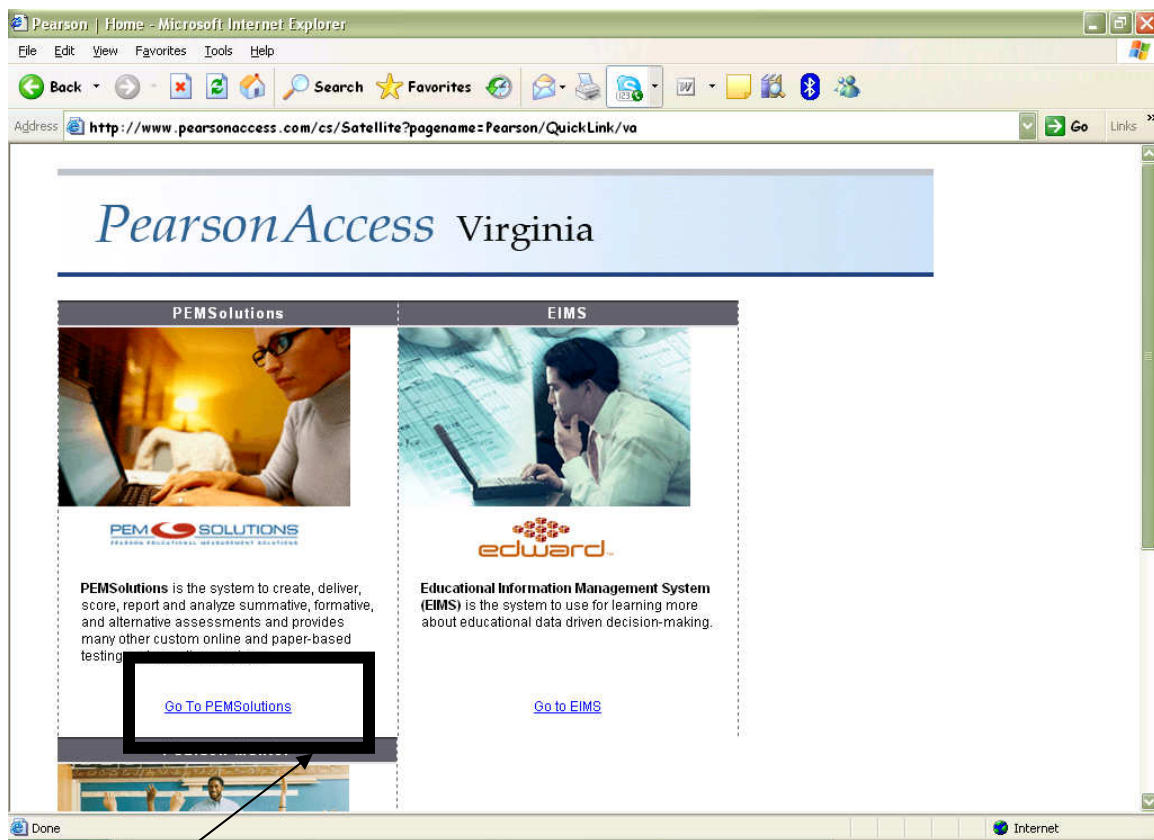


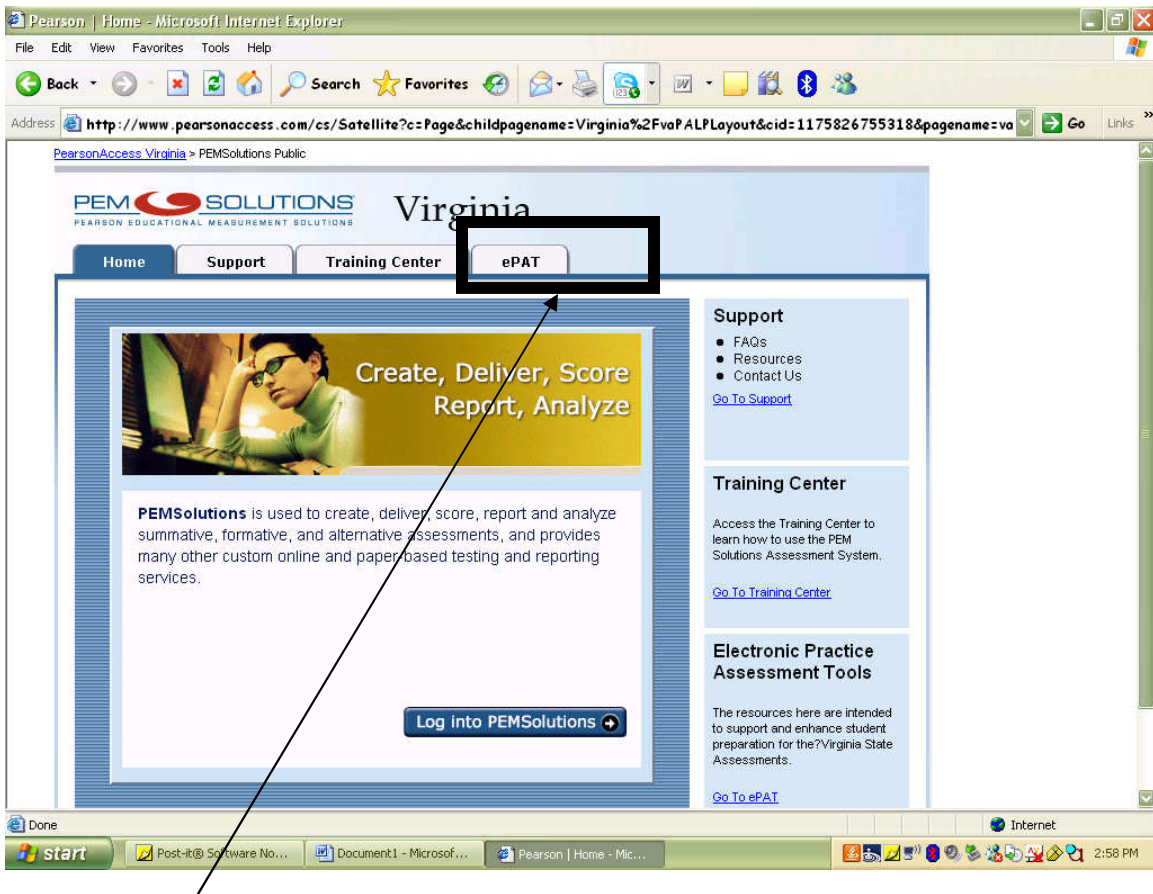
Go to www.pearsonaccess.com



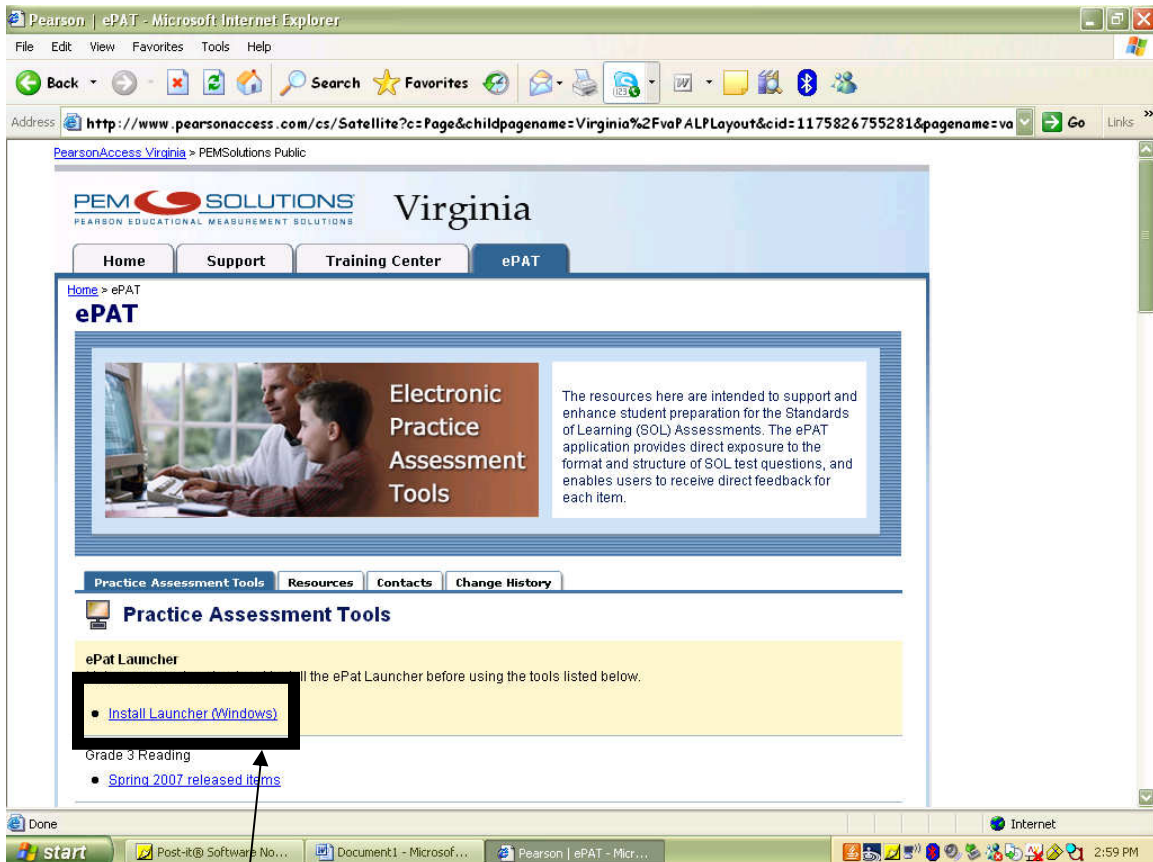
Select “Virginia”



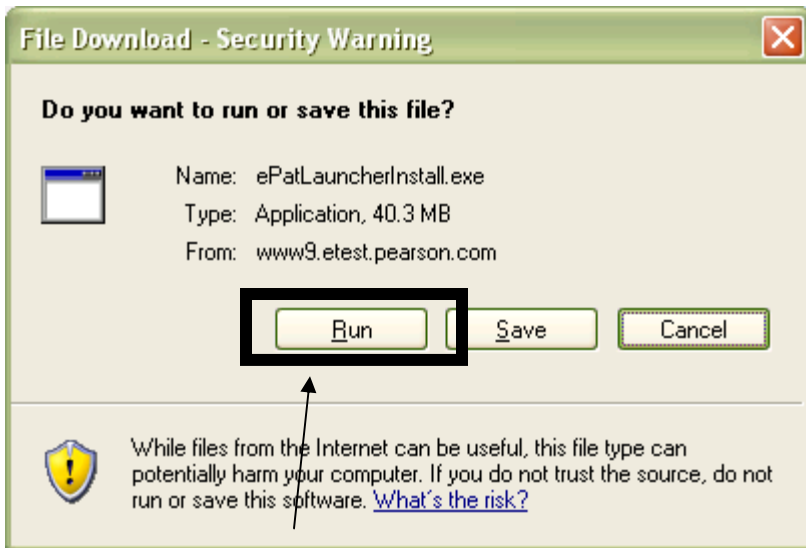
Click “Go to PEMSolutions”



Click "ePAT"



Select "Install Launcher (Windows)"



Always choose “Run” or “Open”

After this, “Next”, “Next”, etc.

- You will know that it has installed properly when you see the ePAT Launcher icon on your desktop:



Now that you have the ePat Launcher you are ready to download specific tests.

- Return to the **V**irginia **e**lectronic **P**practice **A**ssessment **T**ools (ePat) webpage, click on the test that you want to download and select **“run”**.
- To use the practice tests, double-click the ePatLauncher icon on the desktop; choose the correct practice test; enter a name; and choose the “launch” button.
- Additional information: **Formula sheets** for math (pdf files) are found at the **“Resources”** tab within the ePAT section :

To download these files, right-click the name of the formula sheet, choose **“save target as”** and save the file to a location on your computer (such as your mydocs folder).