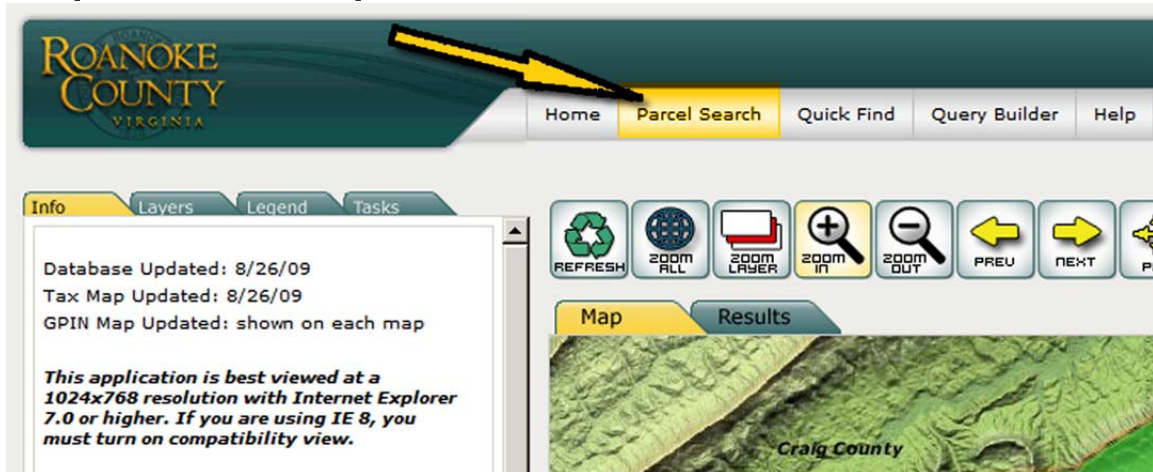


Instructions for finding school attendance zones using the Roanoke County GIS Mapping System

Step 1: Go to

<http://imsweb.roanokecountyva.gov/GIS/Roanoke2/>

Step 2: Click on “parcel search”



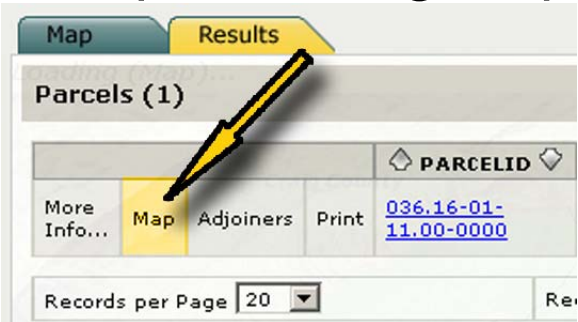
-- next page --

Step 3: Enter the address you are searching for in the window and click “Search Parcels.”

The screenshot shows the 'Parcel Search' window in the Roanoke County Virginia GIS application. The window is titled 'Step 1: Enter Search Criteria' and contains several input fields: 'Owner Name' (with 'John' and 'Smith' as examples), 'Address' (with '100 W Main St' as an example), 'GPIN' (with '1234-12-1234' as an example), and 'Parcel ID' (with '054.02-04-01.00-0000' as an example). The 'Address' field is highlighted in yellow, and a yellow arrow points to the 'Search Parcels' button. To the right of the search form is a 'Map' panel showing a topographic map of a hilly area. Above the map are three buttons: 'REFRESH', 'ZOOM ALL', and 'ZOOM LAYER'. The top of the application features the 'ROANOKE COUNTY VIRGINIA' logo and navigation links for 'Home' and 'Parcel Search'.

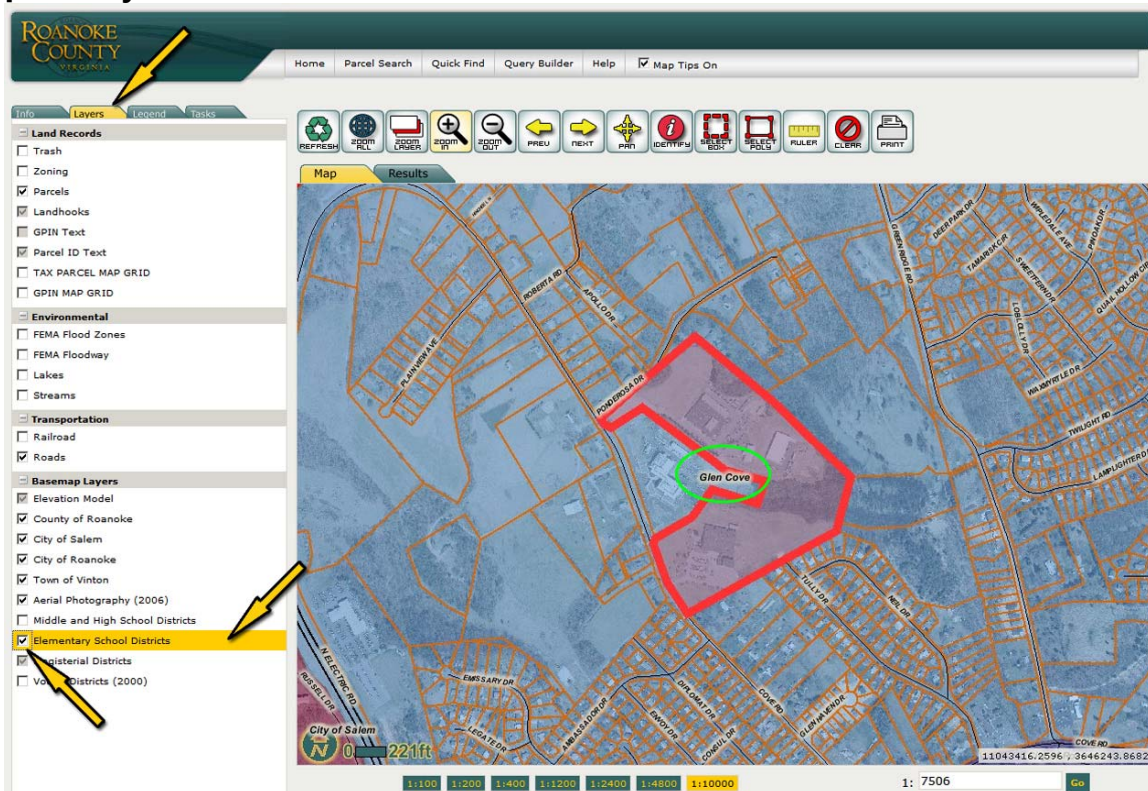
-- next page --

Step 4: When the search results come up, click on the small “map” button in the result. A map preview of the parcel you are searching will come up. When you click on the map button, a larger map will appear.



-- next page --

Step 5: In the window to the left, click on the “layers” tab. Next, check the box next to “Middle and High School Districts” or “Elementary School Districts,” depending on which type of school you are searching for. Next, click on the NAME of the layer (elementary or middle/high) so that it is highlighted in yellow. As you make these changes, the map will change. When you are done, the name of the school will appear over the outline of the parcel you have searched.



Note: you can check both elementary and middle/high to see both results.

If you need additional help, see this page:

<http://www.roanokecountyva.gov/Departments/CommunityDevelopment/Gis/Default.htm>